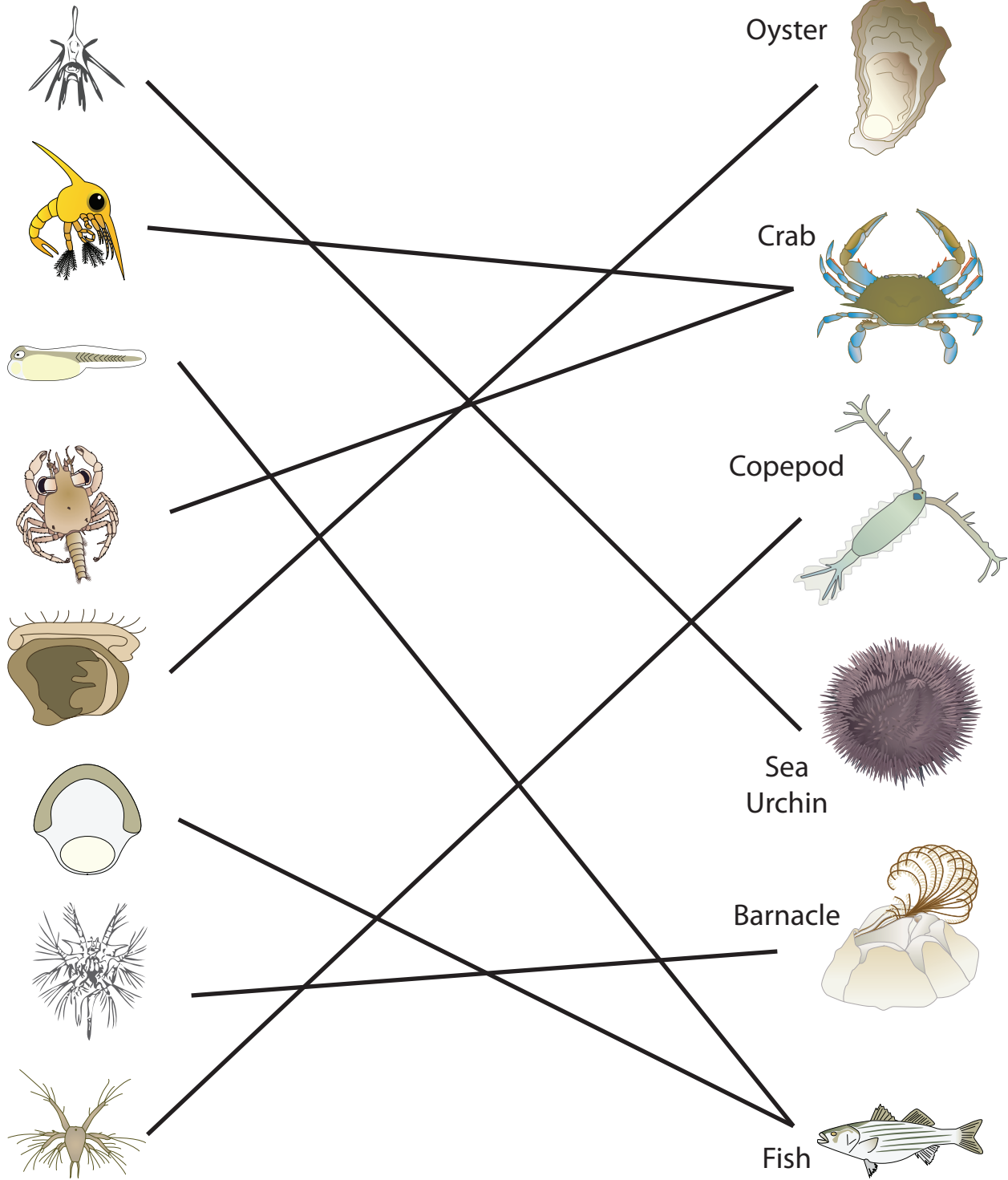


# What will I be when I grow up?

Draw lines to match each juvenile on the left to the corresponding adult on the right.

# KEY



Images courtesy:

Integration and Application Network ([ian.umces.edu/symbols/](http://ian.umces.edu/symbols/))

<http://commons.wikimedia.org/>

Gray, Asa. The Elements of Botany for Beginners and for Schools. New York: The American Book Company, 1887. "Barnacle Nauplii" Retrieved August 3, 2011, from [http://etc.usf.edu/clipart/59100/59106/59106\\_nauplius\\_sm.gif](http://etc.usf.edu/clipart/59100/59106/59106_nauplius_sm.gif)