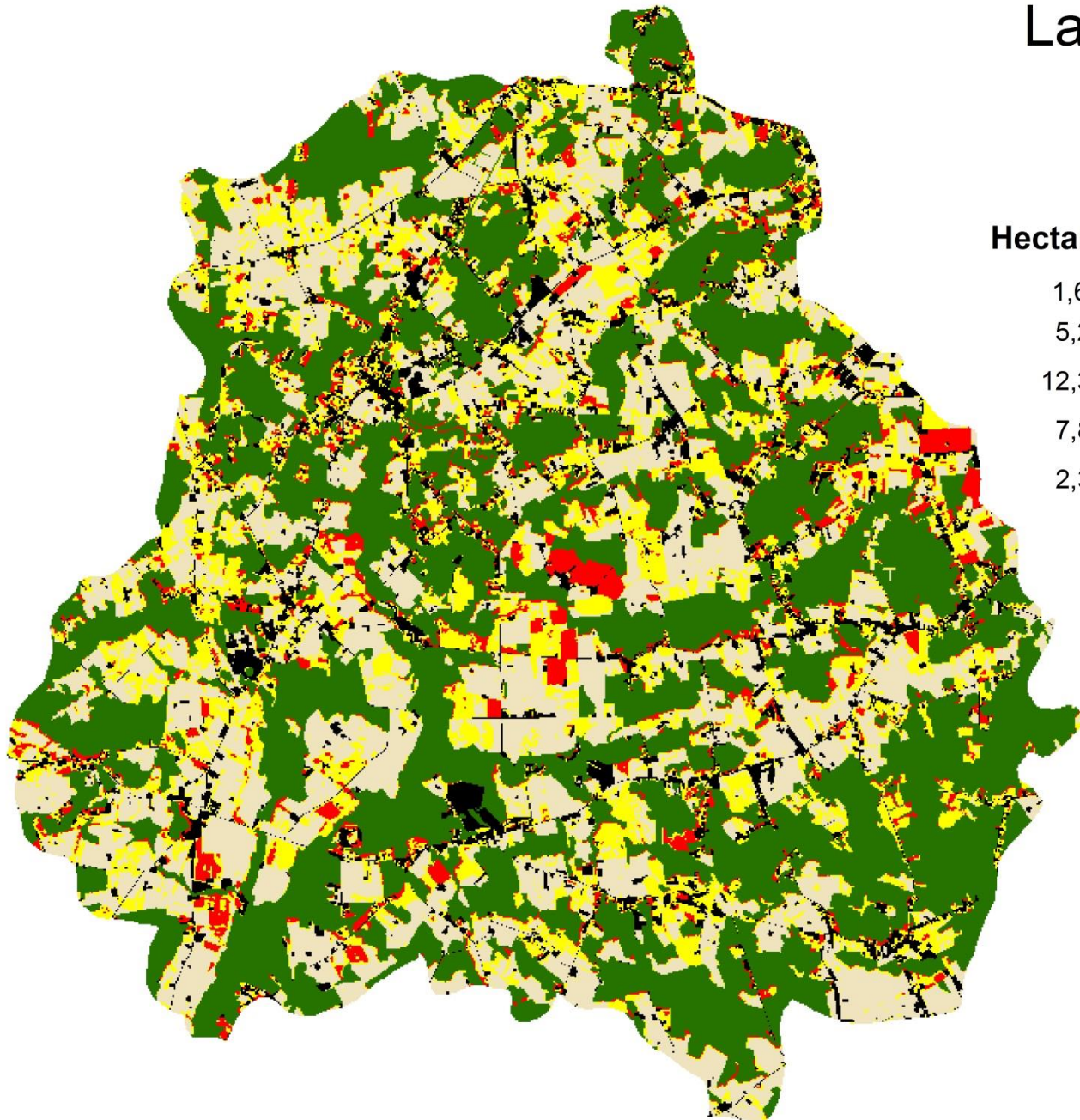


Land Cover Change

October 16, 1987

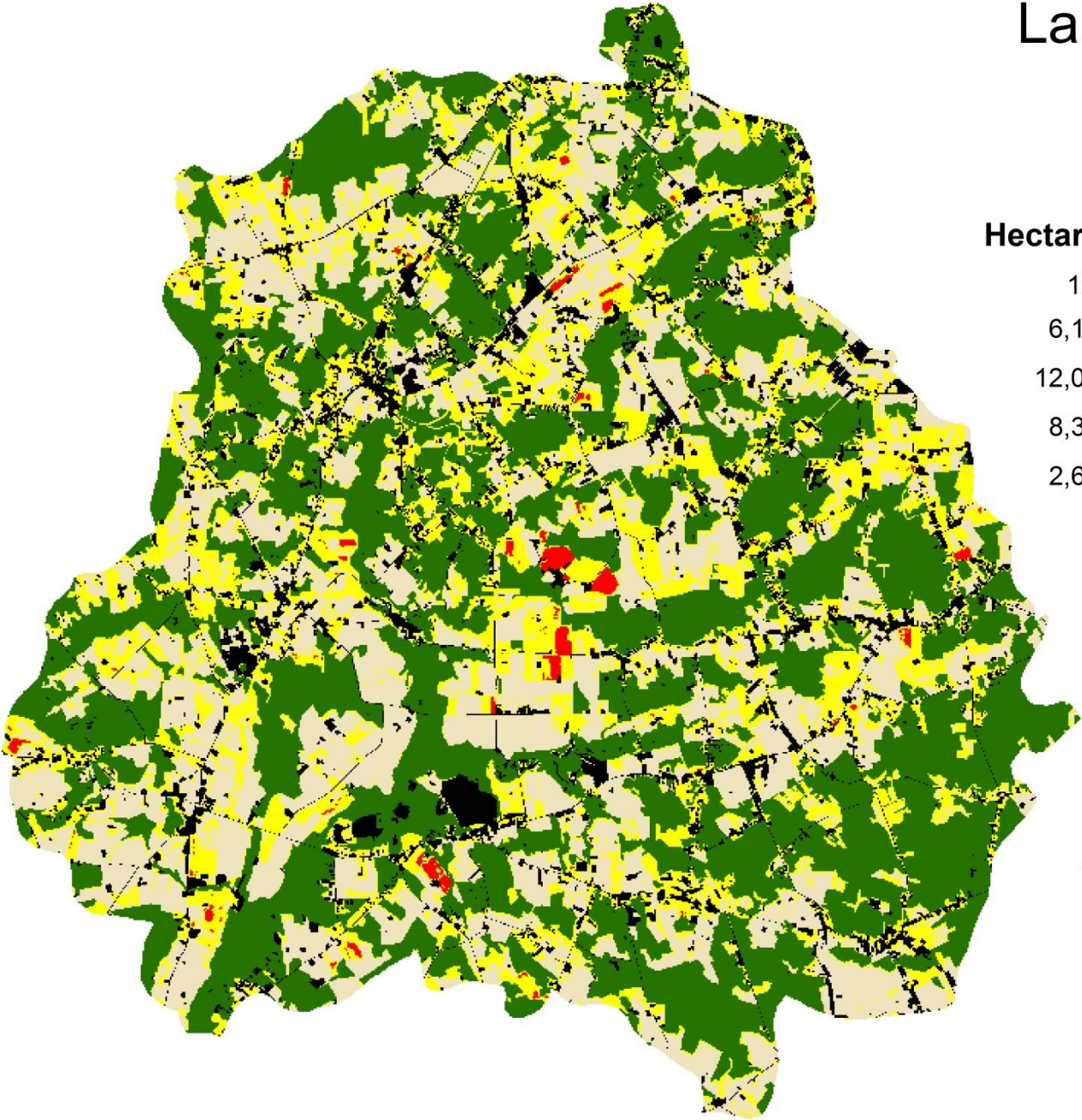


Hectares	Type
1,671	High Plant Growth
5,209	Low to Moderate Plant Growth
12,305	Forest
7,807	Bare
2,341	Other



Land Cover Change

November 1, 1987



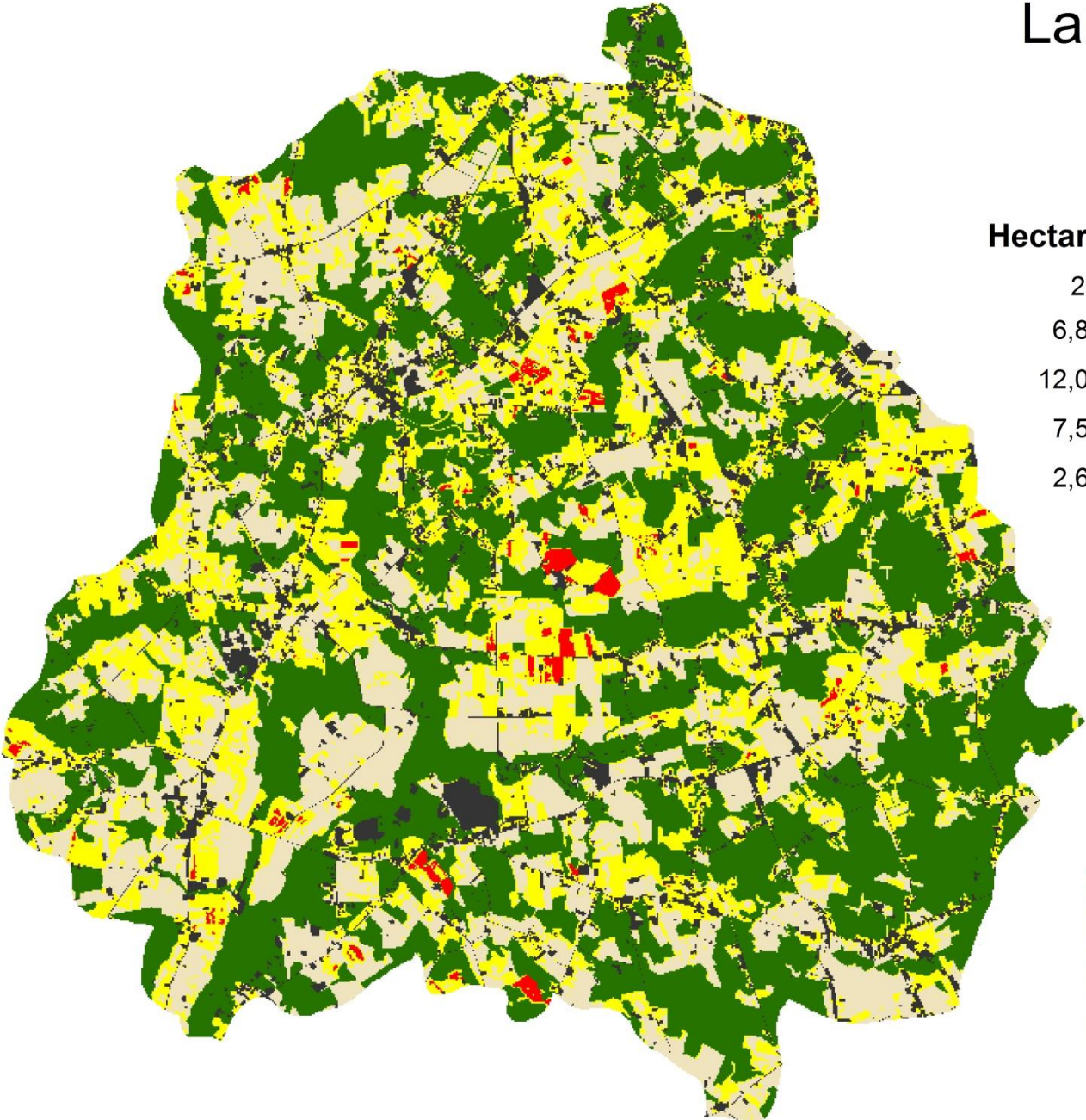
Hectares	Type
190	High Plant Growth
6,167	Low to Moderate Plant Growth
12,022	Forest
8,330	Bare
2,624	Other



Source: Landsat satellite data

Land Cover Change

November 17, 1988



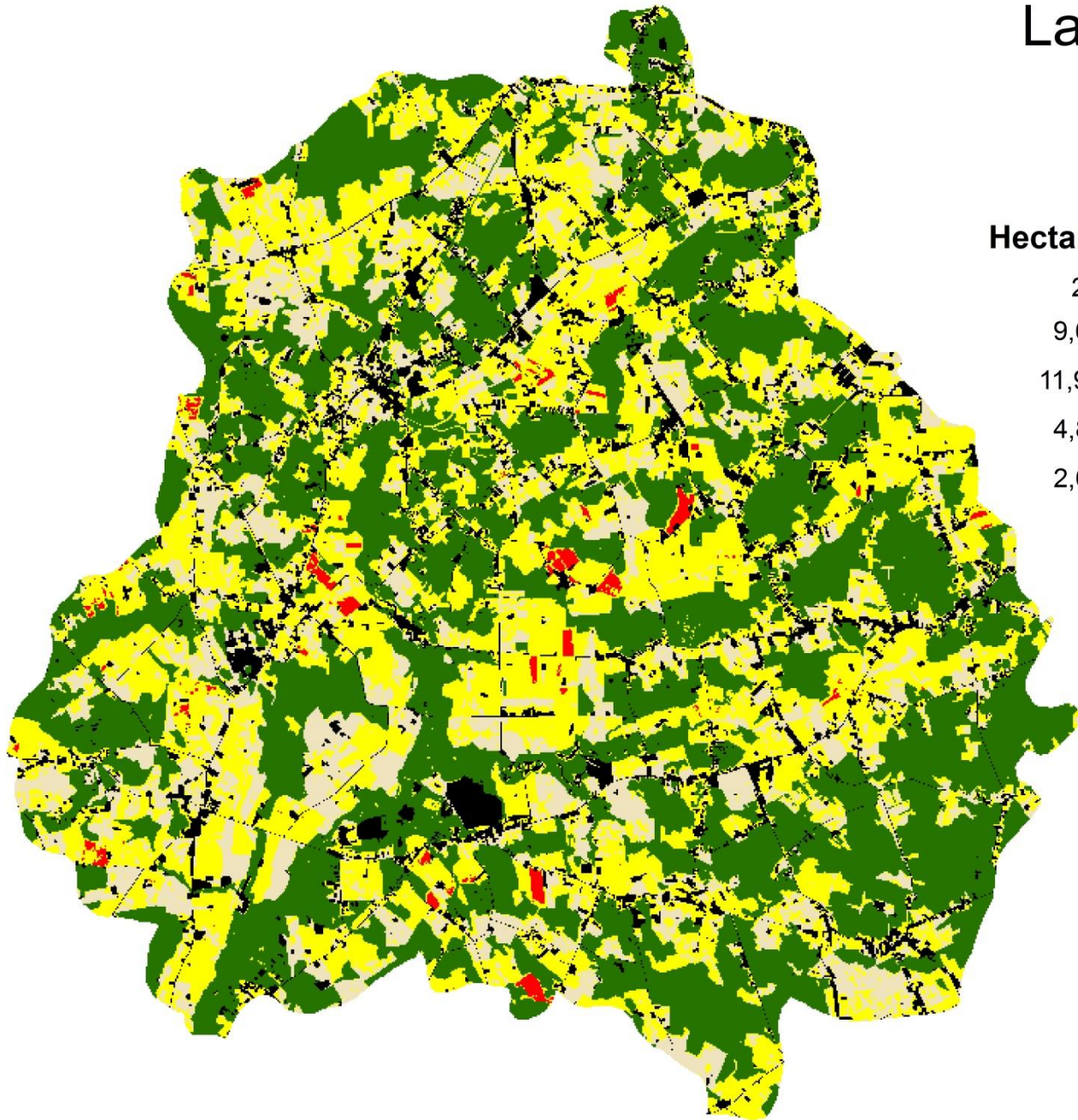
Hectares	Type
298	High Plant Growth
6,819	Low to Moderate Plant Growth
12,022	Forest
7,571	Bare
2,624	Other



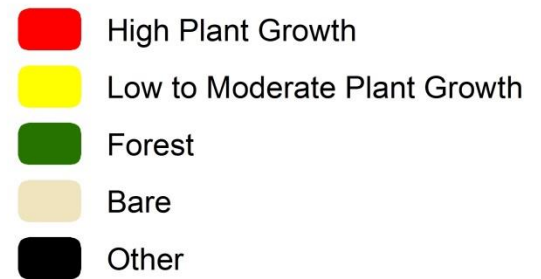
Source: Landsat satellite data

Land Cover Change

March 8, 1988

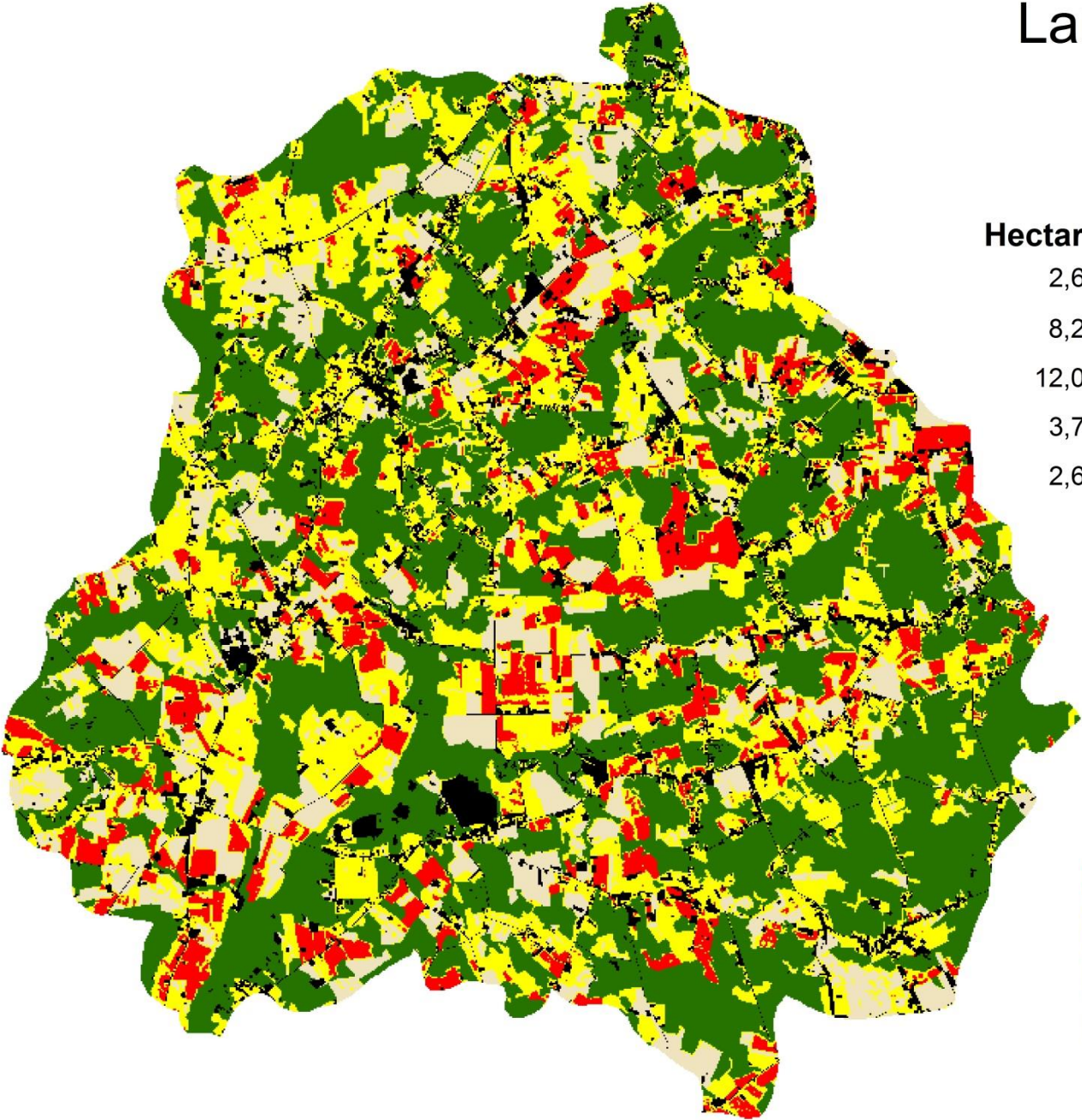


Hectares	Type
234	High Plant Growth
9,671	Low to Moderate Plant Growth
11,983	Forest
4,821	Bare
2,624	Other



Land Cover Change

April 25, 1988



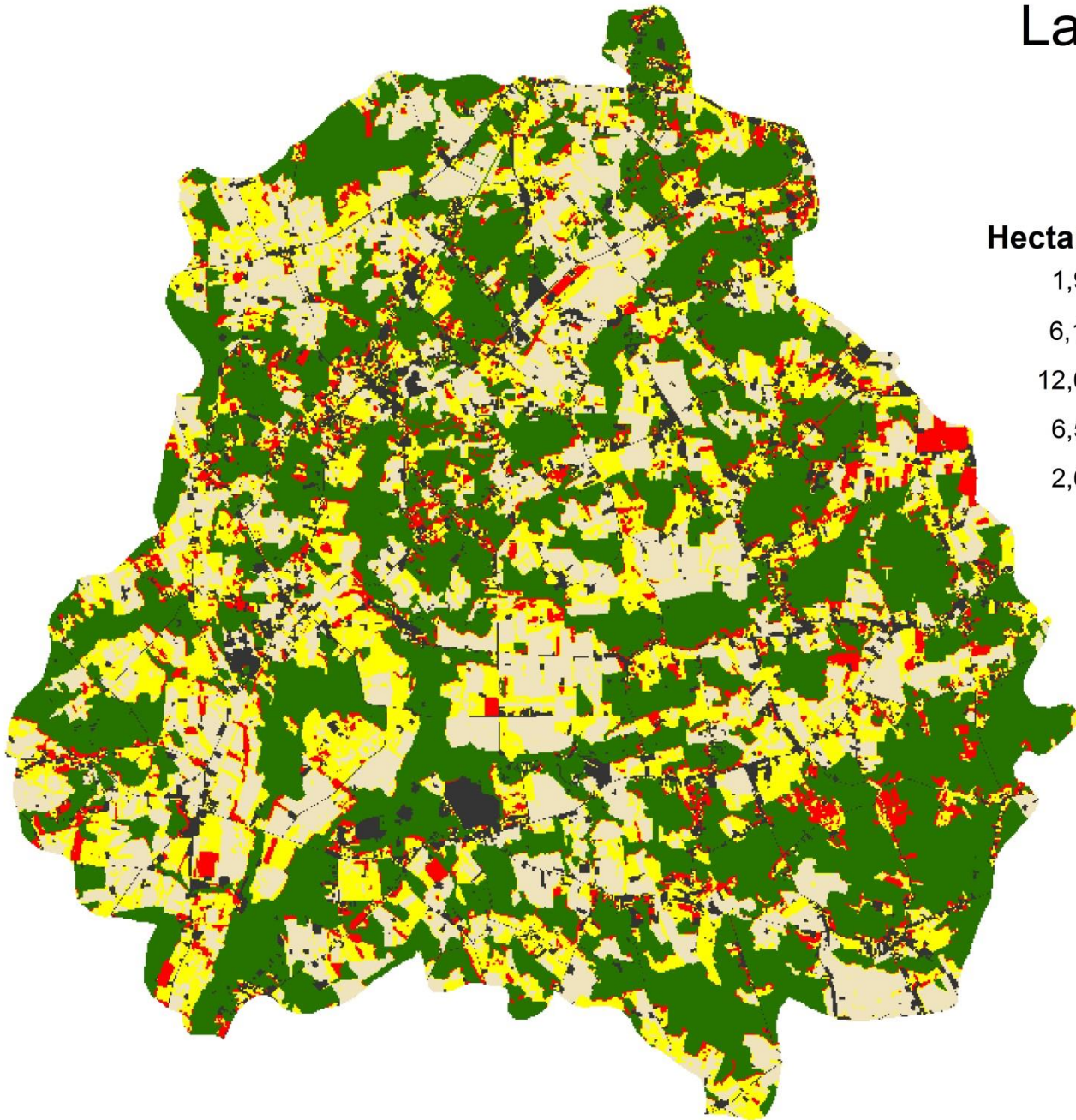
Hectares	Type
2,669	High Plant Growth
8,245	Low to Moderate Plant Growth
12,022	Forest
3,772	Bare
2,624	Other



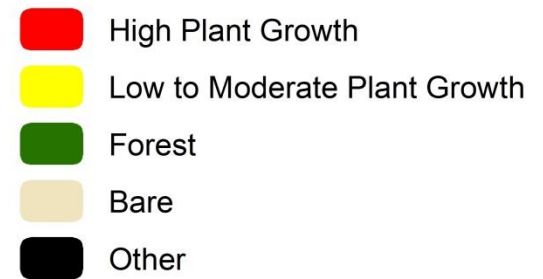
Source: Landsat satellite data

Land Cover Change

June 12, 1988

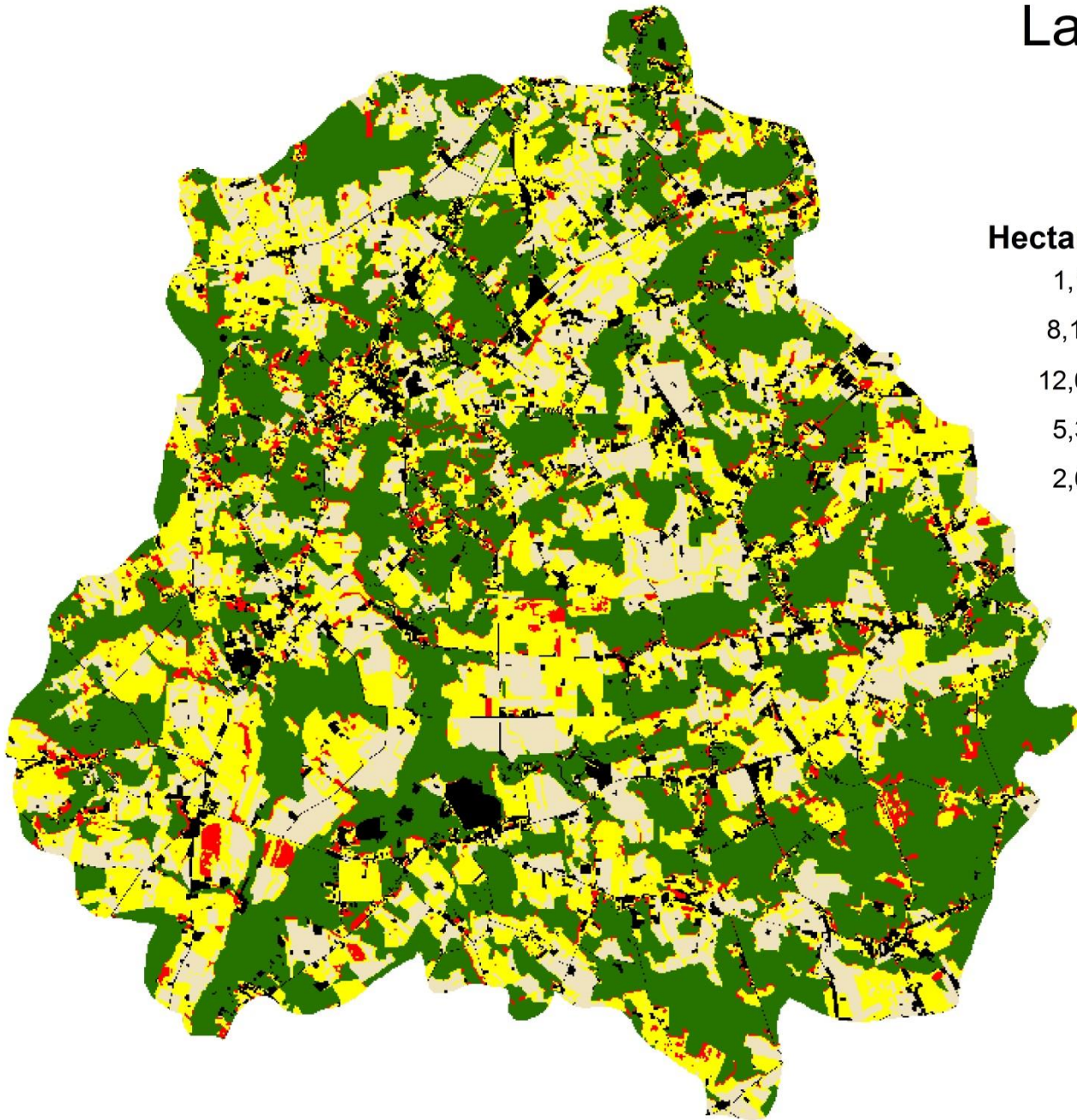


Hectares	Type
1,974	High Plant Growth
6,170	Low to Moderate Plant Growth
12,022	Forest
6,543	Bare
2,624	Other

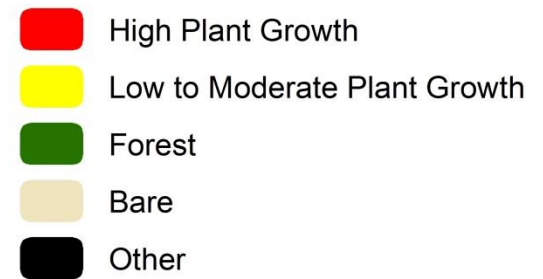


Land Cover Change

June 28, 1988

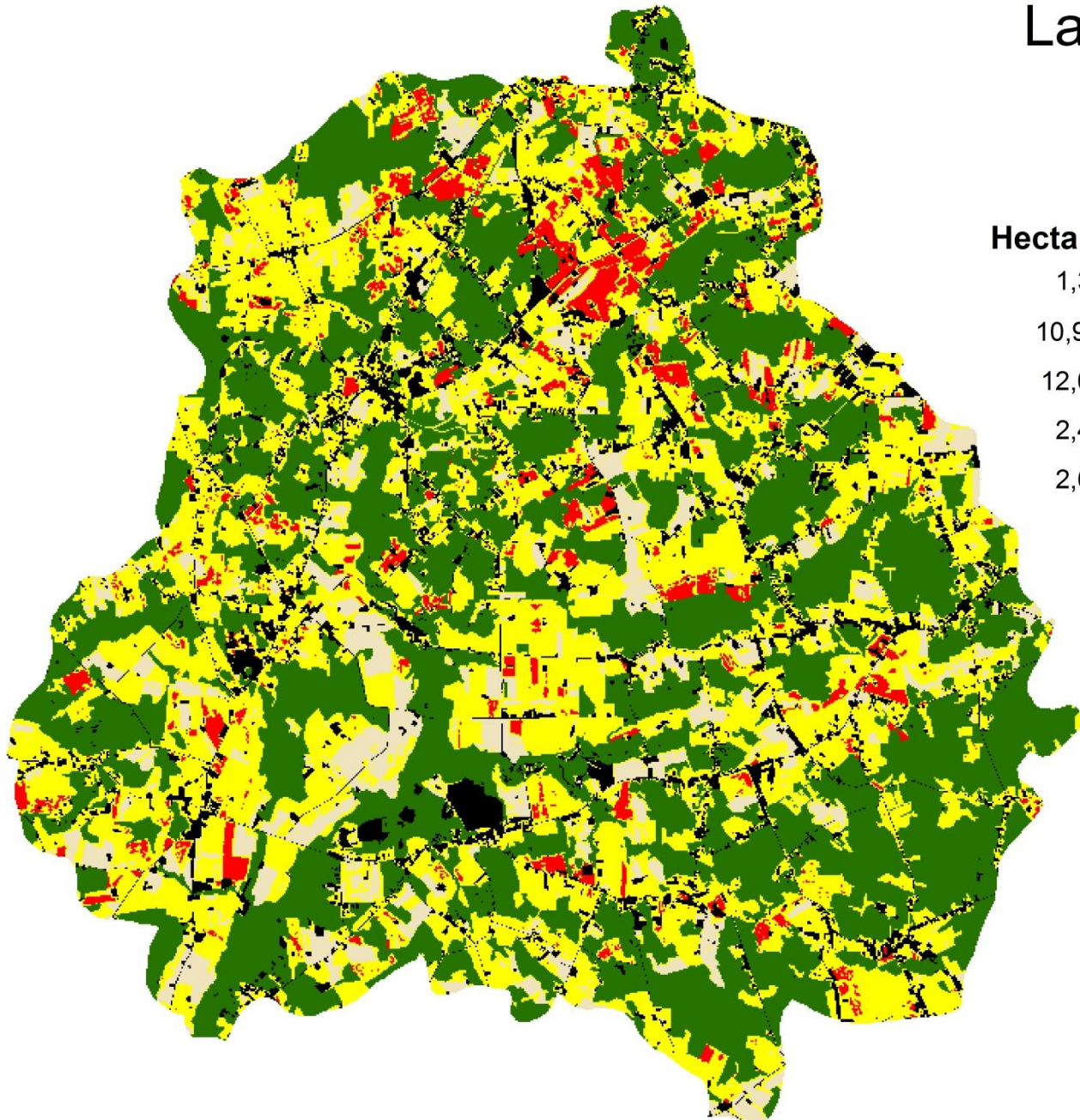


Hectares	Type
1,182	High Plant Growth
8,146	Low to Moderate Plant Growth
12,024	Forest
5,358	Bare
2,622	Other

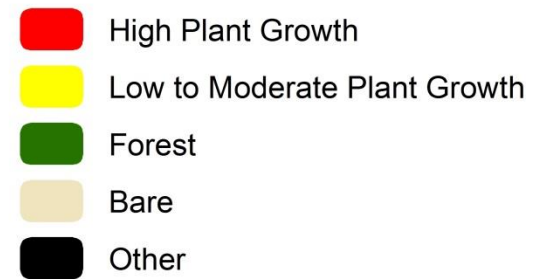


Land Cover Change

July 30, 1988

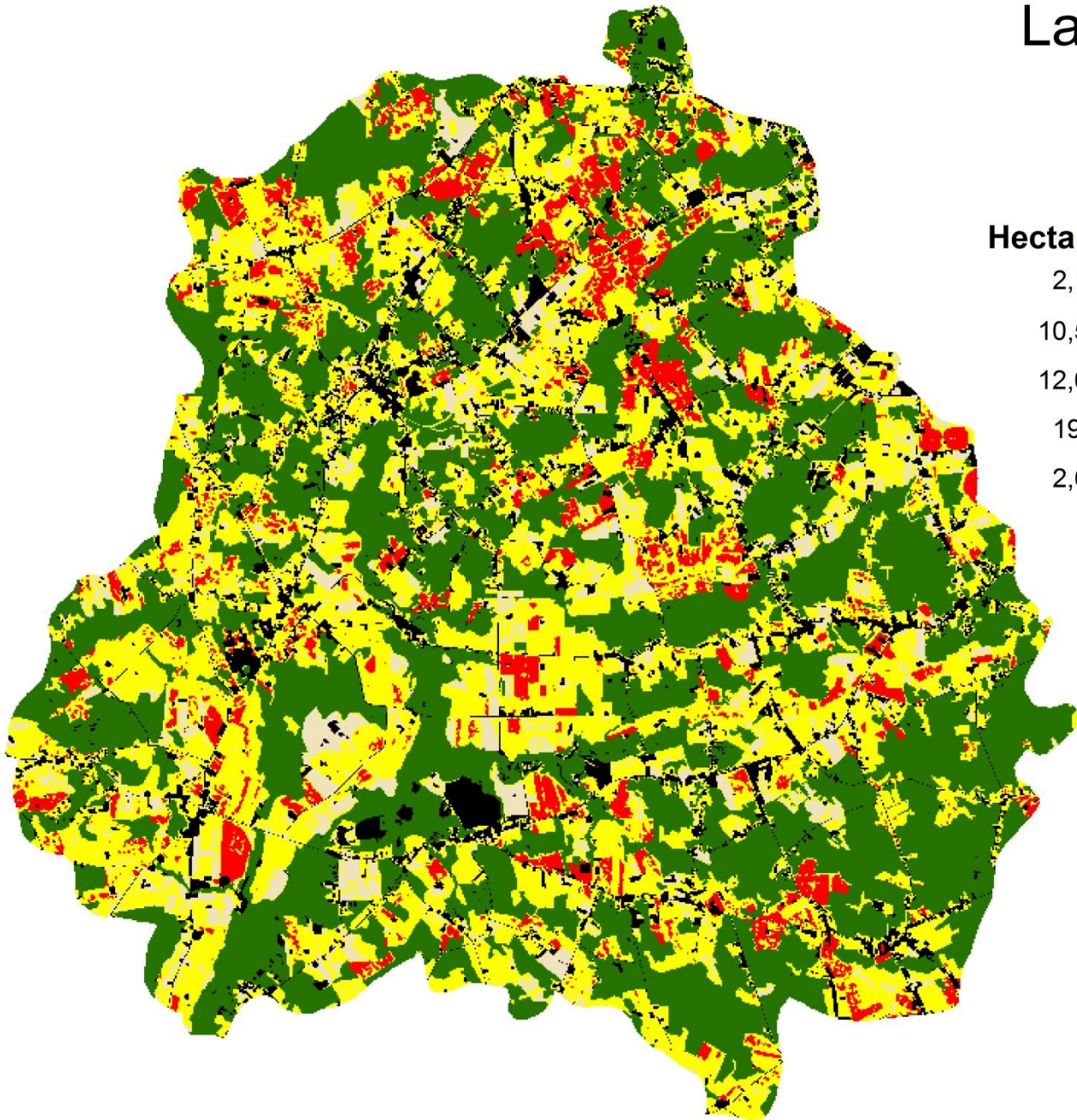


Hectares	Type
1,320	High Plant Growth
10,961	Low to Moderate Plant Growth
12,022	Forest
2,406	Bare
2,624	Other



Land Cover Change

August 15, 1988

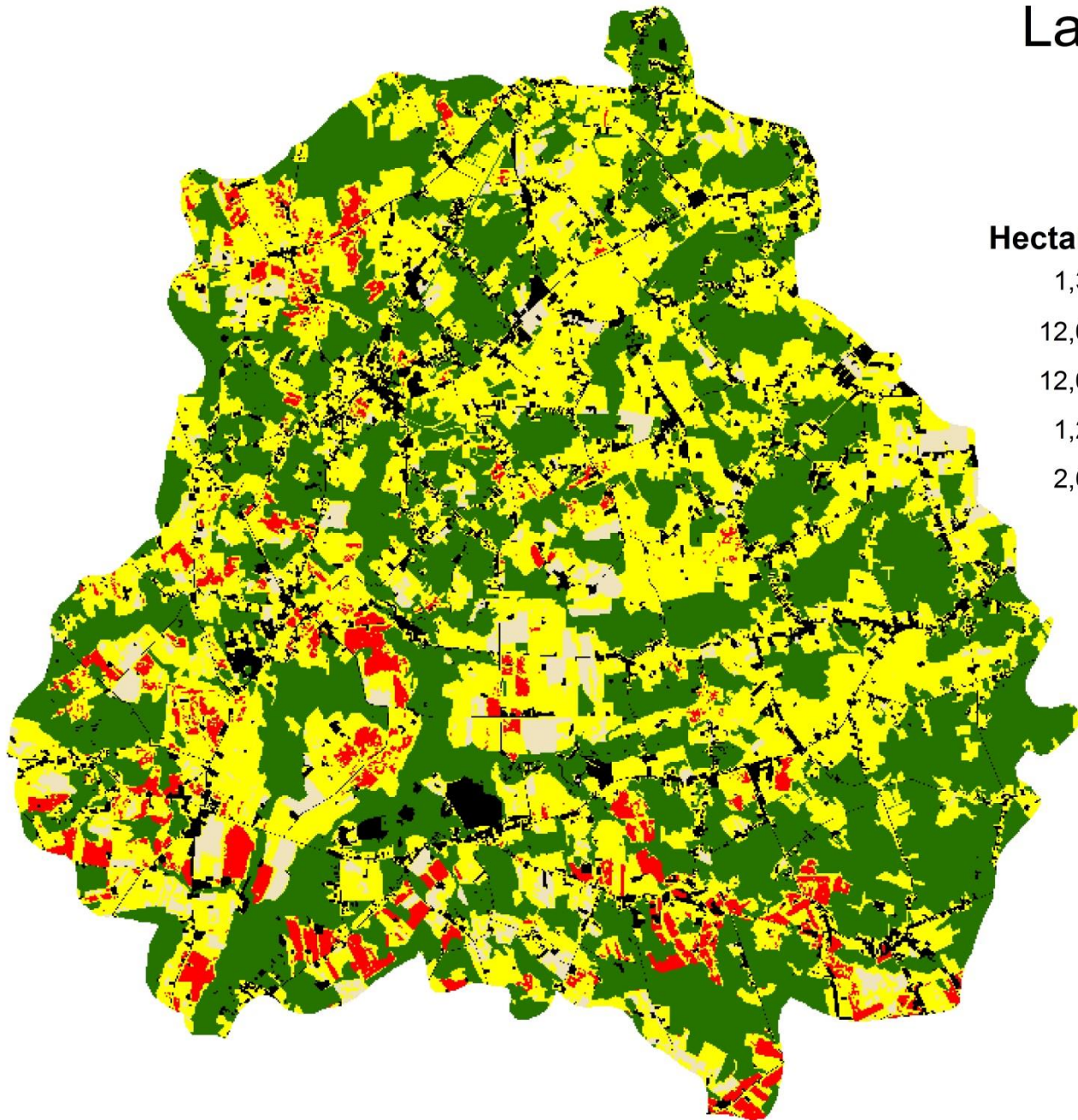


Hectares	Type
2,190	High Plant Growth
10,515	Low to Moderate Plant Growth
12,022	Forest
1982	Bare
2,624	Other



Land Cover Change

September 16, 1988



Hectares	Type
1,356	High Plant Growth
12,033	Low to Moderate Plant Growth
12,022	Forest
1,298	Bare
2,624	Other

